



**ISIPHIWO**  
TRADING GROUP

**COMPANY**  
**PROFILE**

# TABLE OF CONTENTS

**From the CEO's desk**

**Our Diverse Expertise**

**Vision and Mission**

**Core values**

**Introduction**

**BBBEE Policy**

**Group overview Business Units**

- ☐ **Isiphiwo Trading**
- ☐ **Isiphiwo Mining and equipment**
- ☐ **Isiphiwo Properties**
- ☐ **Mooi legacy**
- ☐ **Ubuhle bamashenge**
- ☐ **Isiphiwo Energy**
- ☐ **Isiphiwo Irrigation and Piping**

**Organizational Structure**

**What sets us apart**

**Financial Overview**

**Highlighted Key Achievements**

**Future Goals**

**Office Locations**

[www.isiphiwo.com](http://www.isiphiwo.com)

CONTACT DETAILS:  
[ceo@isiphiwo.com](mailto:ceo@isiphiwo.com)

(+27)32 586 8007



## FROM OUR CHIEF EXECUTIVE OFFICER

In 2004, with determination and a vision to make a difference, I founded Isiphiwo Trading as a young black woman from the rural outskirts of KwaZulu-Natal. As a member of royalty, I viewed my heritage not as a limitation but as a

superpower to impact the lives of many. Today, as we celebrate 20 years of existence in 2024, I am filled with immense pride at what Isiphiwo Trading has achieved. The journey to success has not been easy. Establishing a 100% black

woman-owned entity and setting a path for others to follow required resilience, strategic focus, and an unwavering commitment to quality service and the growth of our people.

**THANDEKA  
MBALI  
AFRICANDER**

## OUR DIVERSE EXPERTISE

**Isiphiwo** remains a beacon of hope for many families, providing livelihoods and support through our employment and initiatives. Keeping our faith at the center of all our business endeavours gave us a firm foundation. Over the past two decades, Isiphiwo has grown from a single entity into a thriving group of business units under the umbrella of **Isiphiwo Trading Group**. We now have representation in various provinces across South Africa, with a clear growth strategy into neighboring countries. Through partnerships with international entities with global representation, we continue to strengthen our position and expand our reach.

Our growth story is a testament to the hard work, dedication, and trust we have built with our clients and partners. As the CEO for the past 20 years, I have witnessed how we overcame countless challenges with a clear strategic focus on offering quality service. Today, Isiphiwo Trading stands strong, representing various sectors and continuing to grow. We are proud of our legacy and remain committed to driving change, creating opportunities, and making a positive impact in the lives of many. With gratitude

### VISION

To be a beacon of excellence in industrial and energy solutions, embodying the spirit of '*Isiphiwo*'—a divine gift—to inspire trust, collaboration, and sustainable growth worldwide.

### MISSION

Our mission is to deliver innovative, sustainable, and transformative industrial solutions that benefit businesses and communities worldwide.

### CORE VALUES

- Quality
- Commitment
- Honesty
- Value for Money
- Professionalism
- Reliability
- Excellence

# Our Clients



**basic education**  
Department:  
Basic Education  
REPUBLIC OF SOUTH AFRICA

**exxaro**  
POWERING POSSIBILITY



**transport**  
Department:  
Transport  
Province of KwaZulu-Natal

 **Eskom**



**Richards Bay Minerals**



**prasa**  
PASSENGER RAIL AGENCY  
OF SOUTH AFRICA

**FOSKOR** 



  
**AIRPORTS COMPANY**  
SOUTH AFRICA

  
**COEGA**  
DEVELOPMENT CORPORATION



  
**idt**  
independent development trust  
independent development trust



**KWAZULU-NATAL PROVINCE**  
HEALTH  
REPUBLIC OF SOUTH AFRICA

**DBSA**  
DEVELOPMENT BANK OF SOUTHERN AFRICA



**health**  
Department of  
Health  
FREE STATE PROVINCE

# INTRODUCTION

**Isiphiwo Trading Group** is a dynamic enterprise recognized for its diversified service portfolio, strategically designed to address the complex requirements of the energy, industrial maintenance, construction, and mining sectors. Our core operations include civil construction, building services, cleaning, renovations, energy solutions, scaffolding supply, insulation material handling, high-pressure pipework solutions, plant hire, property development and management, hospitality services, as well as mechanical and electrical works, alongside the manufacturing of steel and PVC pipes. With a robust workforce of approximately 300 employees and multiple branches situated in South Africa's major cities, Isiphiwo Trading Group is committed to delivering exceptional expertise and operational excellence.

## BBBEE POLICY

Wholly black woman-owned company with a Level 1 BEE rating, strategically positioned to offer best value and service. Isiphiwo is intentional with the efforts to promote BBBEE rating and compliance taking into account supplier development, preferential procurement practices, employment equity and human resource development

**The Isiphiwo Trading Group** is composed of a diverse array of specialized entities, each contributing distinct strengths and expertise that enhance the Group's versatility and competitive advantage. Collectively, these entities form a comprehensive service network designed to meet the varied needs of our clients:



# ISIPHIWO TRADING

- **Core Services:** Established in 2004, Isiphiwo Trading serves as the foundation of our company. We specialize in various sectors, including building construction (schools, renovations, hospitals), civil engineering (road construction, sewer and drainage systems, stormwater management, and water reticulation), as well as cleaning services.
- **Compliance:** Our organization holds CIBD Grading of 8CE, 8GB, and 7CE, along with ISO 9001 certification.
- **Strengths:** We have a proven track record in delivering infrastructure projects tailored to meet the needs of both government and private sectors, including schools, community halls, and sanitation facilities.
- **Expertise:** Our collaboration with major industry players, such as Group Five, enables us to undertake large-scale infrastructure projects while adhering to exceptional quality standards and ensuring timely delivery. We are recognized for our commitment to quality, punctuality, and a focus on community upliftment through job creation and skills development.

# ISIPHIWO MINING & EQUIPMENT

- **Core Services:** Isiphiwo Mining and Equipment specializes in the supply and delivery of construction machinery and equipment to both government entities and private companies. Our expertise extends to building construction, the coal sector, and mining operations. Additionally, we provide transportation logistics for heavy equipment.
- **Compliance:** We hold a CIBD grading of 8GB, 8SL, and 8SL.
- **Strengths:** Our diverse fleet includes excavators, TLBs, bulldozers, dump trucks, and cranes. We offer 24/7 technical support, and our modern fleet is equipped with GPS tracking systems, ensuring timely and secure delivery of materials.
- **Expertise:** We effectively manage the supply chain for critical infrastructure projects, minimizing downtime and optimizing operational flow. Our skilled operators guarantee efficient and safe use of equipment, thereby supporting essential infrastructure and mining initiatives



# ISIPHIWO PROPERTIES

- **Core Services:** Specializing in property development, student accommodations, and property management services.
- **Strengths:** We excel in purchasing properties and renovating them to deliver exceptional value to our clients, catering to both commercial and private accommodation needs. Our high-end properties offer significant value for both long-term and short-term services, encompassing fully managed buildings that include office space and parking facilities.
- **Expertise:** We possess extensive experience in property management and property development.

Our team is dedicated to providing personalized solutions that meet the unique needs of each client, ensuring a seamless experience from start to finish. We pride ourselves on our attention to detail and commitment to quality, transforming properties into thriving communities and dynamic spaces.

At Isiphiwo Properties, our approach is rooted in innovation and sustainability. We strive to incorporate eco friendly practices into our developments, aiming to reduce our environmental footprint while enhancing the living and working experiences of our clients.

Whether you're looking to invest in a new property or seeking a professional team to manage your current assets, Isiphiwo Properties is here to guide you every step of the way, with integrity and excellence at the forefront of everything we do.

# MOOI LEGACY

- **Core Services:** Development and management of bed and breakfast (BNB) establishments across various provinces.
- **Strengths:** Providing valuable bed and breakfast services that cater to both short-term and long-term hospitality needs.
- **Expertise:** Delivering exceptional customer experiences while addressing industry demands.

Our team is dedicated to creating welcoming environments that blend comfort and style, ensuring every guest feels at home. Mooi Legacy prides itself on its attention to detail, from the carefully curated decor to the personalized touches that make each stay unique. With a strong commitment to sustainability, they incorporate eco-friendly practices in their operations, making them a preferred choice for environmentally conscious travelers.

Our portfolio includes a diverse range of properties, each offering a distinct charm and character reflective of the local culture and landscape. Whether nestled in the bustling heart of a city or tucked away in a tranquil countryside, Mooi Legacy's BNBs are strategically located to offer guests easy access to nearby attractions and activities.

In addition to their hospitality services, Mooi Legacy actively engages with local communities, supporting regional development and promoting cultural heritage. Their approach fosters meaningful connections between guests and the places they visit, enhancing the overall travel experience.

Through continuous innovation and a passion for excellence, Mooi Legacy remains at the forefront of the BNB industry, setting new standards for service and hospitality

# Ubuhle Bamashenge

- **Core Services:** Focus on civil construction, electrical services, building construction, mechanical works (lift maintenance), and various fencing options (palisade, steel, concrete, and diamond perimeter fencing) for both government sectors and private enterprises.
- **Compliance:** CIBD Grading of 8ME, 6CE, 6EP, 5GB, and 8SQ.

With a commitment to excellence and innovation, Ubuhle Bamashenge strives to deliver top-tier solutions tailored to meet the unique needs of each client. Our team of experienced professionals is dedicated to maintaining the highest standards of quality and safety, ensuring every project is executed seamlessly from inception to completion.

In addition to our core services, we offer comprehensive project management and consulting services to help guide our clients through every stage of development. Our collaborative approach ensures that each project is completed on time, within budget, and to the exact specifications required.

Ubuhle Bamashenge takes pride in our strong track record of successful projects and satisfied clients. We believe in building long-lasting relationships based on trust, integrity, and mutual respect. Whether it's a large scale infrastructure project or a bespoke residential build, we are equipped and ready to bring your vision to life with precision and expertise



# ISIPHIWO ENERGY

- **Core Services:** Isiphiwo Energy specializes in various energy solutions including the maintenance of electrical power stations. We do electrical works and civil construction, offering a comprehensive range of services including services for renewable energy and fossil energy resources. Our offering includes the supply, transportation, erection, dismantling of scaffolding, and handling of insulation materials. Additionally, we provide high-quality fuel products, including unleaded petrol (93 & 95), 50 PPM and 500 PPM diesel, fuel oil, bitumen, lubricants, and paraffin. We also offer logistics and storage solutions for petroleum products.
- **Compliance:** CIBD Grading 8CE & 8EP.
- **Strengths:** Our strength lies in our partnerships with specialized international entities that comply with ISO 3834 standards, ensuring the highest levels of safety and quality. We have a proven track record of executing high-pressure industrial projects. Our highly skilled and responsive team is capable of rapid mobilization to address unexpected breakdowns. We have demonstrated expertise in serving both government and private sectors, providing timely and efficient fuel delivery.
- **Expertise:** We offer tailored solutions for energy sector operators, industrial contractors, and emergency response teams, utilizing advanced technologies such as computer-aided design (CAD) to enhance efficiency and precision. Our expertise in boiler maintenance, high-pressure pipework, and mechanical repairs guarantees minimal disruption to our clients' operations.

At Isiphiwo Energy, we understand the critical role energy plays in driving progress and development. Our mission is to empower our clients with robust, cost-effective, and sustainable energy solutions that not only meet their current needs but also anticipate future challenges. Whether it's a small-scale project or a large industrial operation, we are committed to delivering excellence and innovation, helping our clients succeed in an ever-evolving energy landscape.

# ISIPHIWO IRRIGATION & PIPING

- **Core Services:** We specialise in the manufacturing and delivery of steel pipes including seamless, steel columns, and PVC pipes. Our expertise also extends to constructing irrigation pipelines, reservoirs, and dams. We also specialize in cardboard and packaging materials, where the cardboard rolls and sheets can be used for industrial and packaging needs. We also offer corrugated boxes that we can customize for different sizes and uses. Our packaging is biodegradable, aligning with sustainability trends. We also offer plastic pallets and stretch wraps to secure bulk goods in transit. We pride ourselves in offering solutions that are both functional and sustainable, including customer-specific customization requirements.
- **Compliance:** We adhere to international standards, including ISO 9001, ASTM (inclusive of ASTM D638, ASTM A36, and ASTM F963), and JIS G 3445, ensuring the highest quality in our products and services. Our service offering also complies with the requirements of FSSC 22000, acknowledging food safety as required, including consideration that pipes may transport water or food-grade liquids; thus, these need to meet safety and hygiene standards, ensuring that there is no leaching of harmful substances into the contents that they carry.
- **Strengths:** Our pipes are manufactured in-house according to customer specifications. Our diverse product offerings include steel seamless pipes, structural tubes, steel columns, steel cylinders, PVC water pipes, irrigation pipes, and agricultural drainage pipes. Our packaging is suitable for both industrial and agricultural packaging needs, including cardboard rolls and sheets whilst being environmentally sustainable. We also provide additional customization services tailored to meet specific client needs. Furthermore, we manage logistics and delivery, distinguishing ourselves as a local supplier that upholds international standards while simplifying the process for clients by eliminating the complexities associated with customs management. This approach allows us to deliver optimal value to our customers. We pride ourselves on international partnerships which allow us to meet international standards.



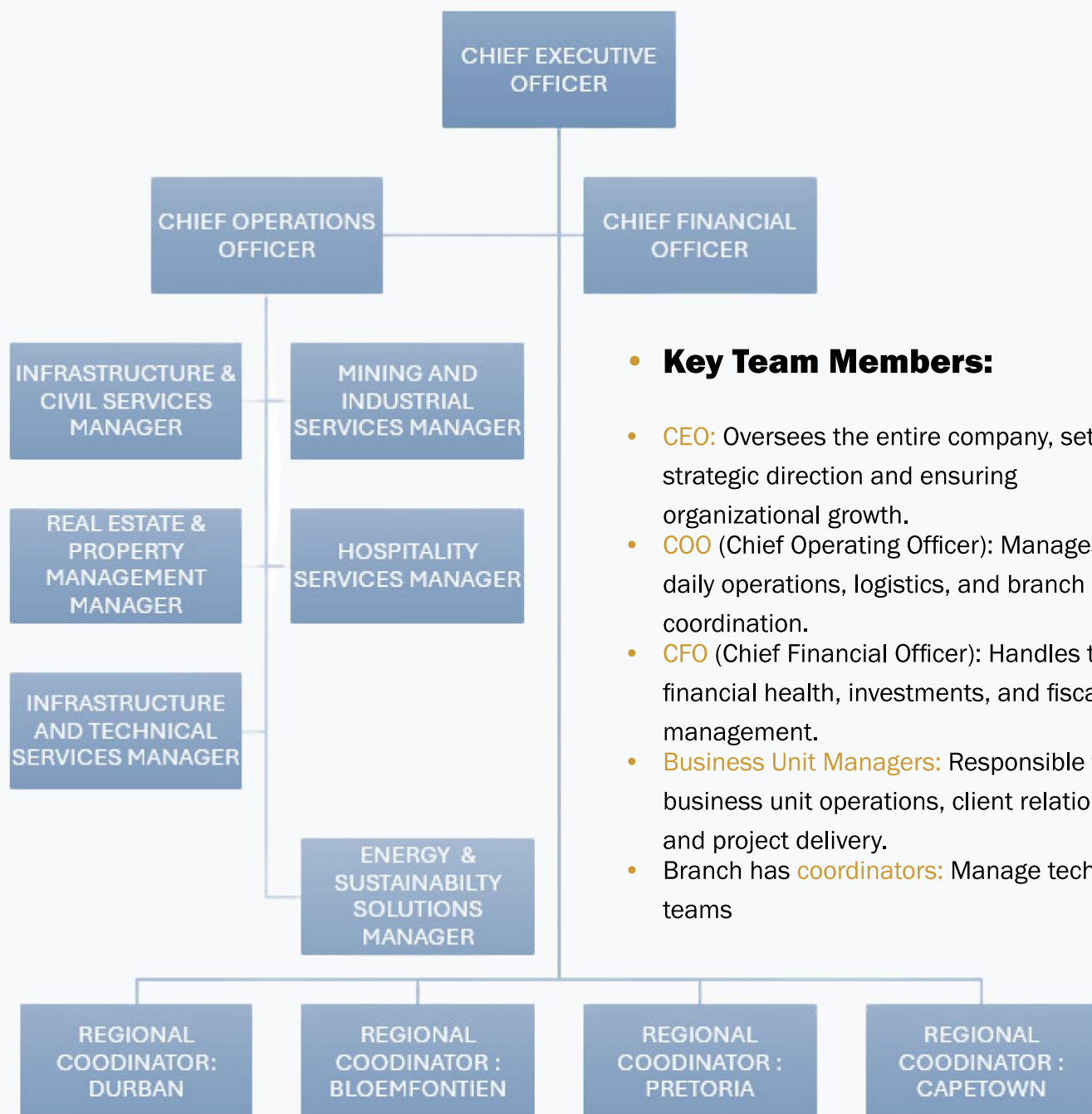


Our commitment to innovation and customer satisfaction is at the heart of everything we do. We continuously invest in the latest technology and training to ensure our team is equipped to handle the most complex projects with precision and efficiency. Our skilled engineers and technicians work closely with clients to develop tailored solutions that not only meet but exceed expectations.

In addition to our core services, we offer comprehensive support throughout the project lifecycle, from initial consultation and design through to installation and maintenance. This end-to-end service model helps our clients achieve their goals more effectively and ensures long-term reliability and performance of the installations. By fostering strong relationships with our clients and partners, Isiphiwo Irrigation and Piping remains at the forefront of the industry, delivering high-quality, sustainable, and cost-effective solutions that make a positive impact on communities and the environment. We are dedicated to shaping a future where resources are used efficiently and responsibly, contributing to the well-being of both people and the planet.



# ORGANISATIONAL STRUCTURE



## • **Key Team Members:**

- **CEO:** Oversees the entire company, setting strategic direction and ensuring organizational growth.
- **COO (Chief Operating Officer):** Manages daily operations, logistics, and branch coordination.
- **CFO (Chief Financial Officer):** Handles the financial health, investments, and fiscal management.
- **Business Unit Managers:** Responsible for business unit operations, client relations, and project delivery.
- Branch has **coordinators:** Manage technical teams

# WHAT SETS US APART

## 1. Integrated Service Offering:

A one-stop solution for scaffolding, insulation, logistics, construction, plant hire, energy, and emergency repairs.

## 2. Commitment to Safety:

Adherence to ISO 3834 and rigorous safety protocols ensures industry-leading standards.

## 3. Technological Excellence:

Leveraging CAD, building information modelling (BIM), and advanced diagnostic tools for operational efficiency.

## 4. Proven Track Record:

Successful execution of diverse projects, from VIP toilet construction to multi-million rand facilities like the Phoenix Mortuary and Nongoma Museum.

## 5. Strategic Location:

Branches in Durban, Cape Town, Bloemfontein, and Pretoria ensure nationwide accessibility and prompt service delivery.

## 6. Health and Safety:

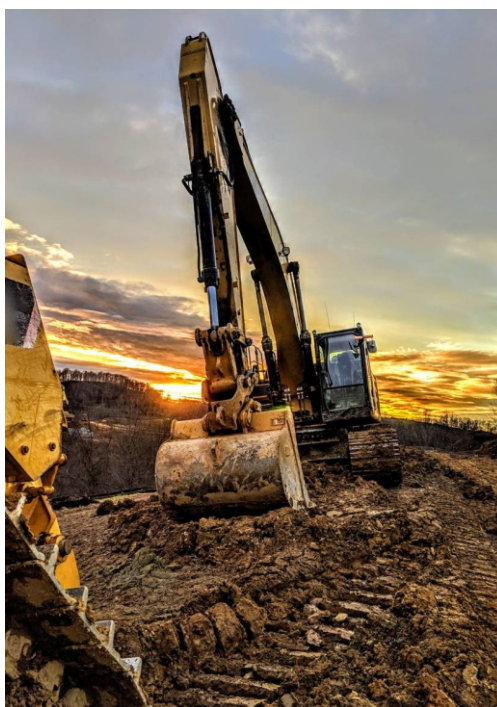
We maintain strict compliance with the Occupational Health and Safety Act (OHSA).

## 7. Environmental Impact:

We implement environmental management systems (EMS) to minimize our footprint on projects, ensuring responsible resource usage.

## 8. Sustainability Focus:

Incorporation of eco-friendly materials and methods aligns with global environmental priorities.



## 9. Socioeconomic Impact:

Significant contribution to job creation, with a vision to employ over 1,000 people within five years.

## 10. Specialised Expertise:

Expertise in mining equipment services, including maintenance and support for drilling, earth-moving, and conveyor systems.

## 11. Energy Sector Leadership:

Demonstrated excellence in fuel supply logistics and storage solutions, underpinned by a commitment to empowerment and transformation in the energy sector.

## 12. Construction Leadership:

Delivery of high-impact construction projects and reliable plant hire services, ensuring infrastructure growth and community development.

## 13. Customer-Centric Approach:

Dedicated to understanding and meeting the unique needs of each client, fostering long-term partnerships through personalized service and continuous support.

## 14. Innovation and Adaptability:

Constantly evolving to incorporate the latest industry trends and technologies, ensuring our solutions remain cutting-edge and adaptable to changing market demands.

## 15. Robust Quality Assurance:

Implementation of comprehensive quality control measures throughout all processes, guaranteeing exceptional standards and client satisfaction.

## 16. Strong Financial Stability:

A solid financial foundation that ensures the ability to undertake large-scale projects without compromising on quality or timelines.

## 17. Collaborative Network:

Partnerships with leading suppliers and industry experts, providing access to a wide range of resources and knowledge that enhance project



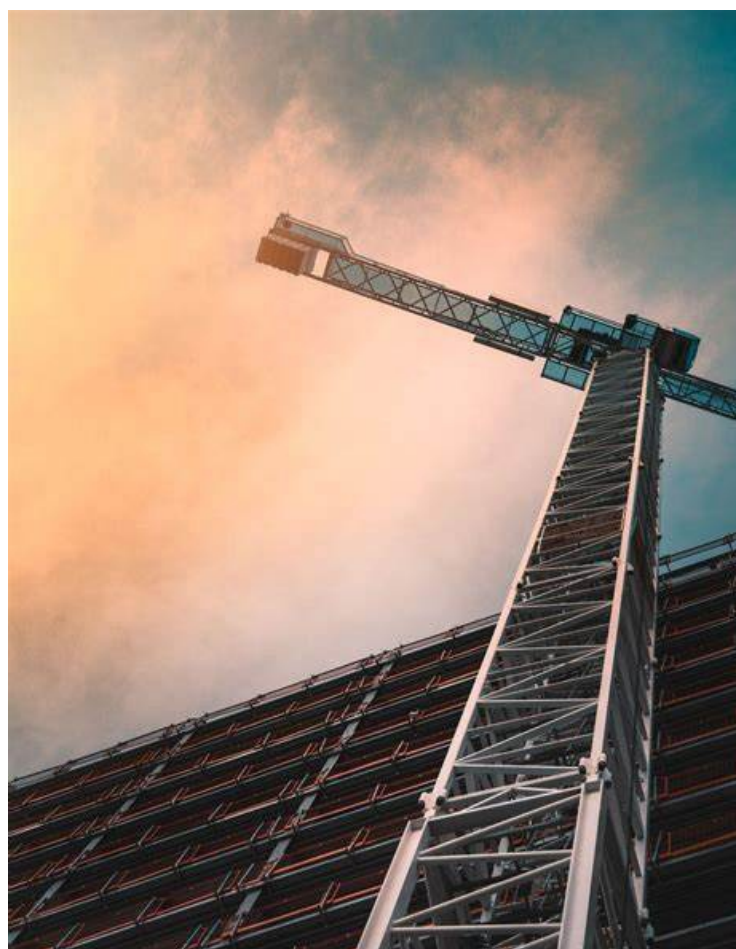


# FINANCIAL OVERVIEW

The Group is poised for exponential growth, with an anticipated revenue of ZAR 1 billion and a projected growth rate of 20% annually. Our financial strategy emphasizes reinvestment in cutting-edge technologies, workforce training, and sustainable practices to ensure long-term profitability and market leadership.

## Highlighted Key Achievements

- Successfully secured state contracts through ISO certification and strategic joint ventures.
- Expanded service portfolio to include emergency repairs, logistics, plant hire, energy solutions, and civil engineering works.
- Maintained a strong client retention rate through exceptional service delivery and relationship management.
- Supplied and maintained critical mining equipment for Petra Diamonds and other prominent clients.
- Established Isiphiwo Energy as a trusted fuel supplier, serving government and private sector clients with unmatched efficiency and reliability.
- Delivered infrastructure projects in partnership with municipalities, contributing to community development and improved service delivery.



# ESG

Environmental | Social | Corporate Governance



## Environmental

- Climate Change Strategy
- Bio-diversity
- Water Efficiency
- Energy Efficiency
- Carbon Intensity
- Environmental Management System



## Social

- Equal Opportunities
- Freedom of Association
- Human Rights
- Customer and & Product Responsibility
- Child Labour



## Governance

- Business Ethics
- Compliance
- Board Independence
- Executive Compensation
- Shareholder Deocacy

# FUTURE GOALS

## 1. Market Expansion:

Penetrate neighboring countries to diversify revenue streams and reduce dependency on the South African market.

## 2. Service Innovation:

Introduce modular scaffolding systems, predictive maintenance solutions, and eco-friendly products.

## 3. Digital Transformation:

Enhance online service channels and integrate advanced ERP systems for seamless operations.

## 4. Socioeconomic Development:

Actively contribute to reducing unemployment and supporting community growth.

## 5. Strategic Partnerships:

Strengthen collaborations with government and private sector stakeholders to secure large-scale projects.

## 6. Energy Sector Growth:

Expand Isiphiwo Energy's product offerings and geographic reach while fostering community empowerment.

## 7. Corporate Social Responsibility:

Increase involvement in community upliftment initiatives, focusing on education, skills training, and environmental conservation.

### OFFICE LOCATIONS

Isiphiwo Trading Group operates in all provinces of South Africa and beyond borders. We have offices in Durban, Bloemfontein, Pretoria and Cape Town

**KWAZULU NATAL  
HEAD OFFICE**  
12 Preash Park,  
Garlike Drive,  
Ballito,  
4420

**FREE STATE**  
1 Roth Ave,  
Willows,  
Bloemfontein,  
9301

**GAUTENG**  
Office 511  
237 Sophie De Bryun street  
Pretoria  
0002

**WESTERN CAPE**  
24 Edinburg Drive,  
Bishops Court,  
Cape Town,  
8001

**DEPO & PLANT STORAGE**  
Macekane Reserves, Empangeni  
3880